

Recognizing Sexual Behaviors through Hand Analysis

Dr. Kanchana Kohombange

Department of Palmistry, Viswa Jyotish Vidyapith Kolkata, India, Bharathiya Jyothisha Padana Kendram, Kerala, India

Abstract: Hands show basic sexuality than most people realize. Hand reading is not just about shape, line formation and other such features. We use our hands to express ourselves in close encounters of the sexual kind as well. Our hands reveals basic drives urges and our capacity for giving and receiving love and affection. The main objectives of this research are recognizing sexual behaviors of people and also sexual behaviors that are linked to abnormal chromosomal levels through hand analysis. This work covers the study of various types of people who are having different types of sexual behaviors and desires. Obtain both handprints of all these people. Various aspects were observed under four main streams of palmistry. The percentages of each of the signs were categorized. Part of Chiromnomy of our hands denotes our overall sexual personality. Part of Chiromancy indicates desires, emotions and sexual nature. Part of Dermatoglyphics exposes inherits traits. Part of hand gestures reveals the emotional nature either offensive or defensive. Results exposed that human behaviors and desires can be recognized through hand.

Keywords: Chiromnomy, Chiromancy, Dermatoglyphics, Gestures.

1. INTRODUCTION

Since childhood we learn to use our hands to express our emotions. Our emotional states of anger, caring, fear, love sorrow and surprise are molded very early in our lives through our contact with other people and the world around us. We use our hands to explore objects and also ourselves by touch. Human hand is unique in being an essential part of physically expressing our deepest emotions and feelings. Therefore when we make love, we learn to use our hands.

2. METHODOLOGY

Obtain handprints of various types of people who are having different types of sexual behaviors and desires. Taking prints was done by two types. First type was carried out using fingerprint ink CAT. NO. 231T (manufactured by SIRCHIE fingerprint labs, ink. 100 hunter place Youngsville, NC 27596 USA) Second type was taking clear high resolution photo of both hands. In addition it includes a recode of personal data. Examined the handprints and various aspects were observed under four main streams of palmistry. By contrast, results were compared with their sexual behaviors and emotions. Finally all the results classified.

3. RESULTS

A. Chiromnomy:

Shape of the hand:

People with square hands are customary in their sexual needs and desires. Dependable and straightforward, they are liable to get caught up in routines and habits even in their sexual expression that are hard to change. Much more practical than romantic, they make good providers. Those with square hands are simply more private than most. People with round or conic hands are naturally romantic. They are very impulsive, extremely sensitive to atmosphere, color shape and sound

and may be likely to falling in and out of love. People with spatulate hands are unpredictable. Those with pointed hands are often out of touch with the real world when they fall in love. They are wonderful lovers if they manage to find out right partner. If the hand is soft, they are inclined to Pleasure-seeking.

Type of skin:

A thin hand denotes lack of passion, romance and sensuality. Sometimes these people may have strong and lasting relationship. But, sexual or romantic attachment is very little. Thickness of the hand denotes opposite qualities of plenty of warmth, energy and sensuality.

The texture of the skin is determining psychosexual makeup. Coarse skin texture denotes less sensitive nature. This type of person leans towards physical pleasure very much. Sometimes may not care about partner's needs. A fine soft texture always indicates a refined emotional sensitivity. This type of person more likely to respond to imagery and fantasy in sexual situations and can more easily be affected by the words of the partner.

When there is hairy type found in a woman hand is denotes cruelty. Hair on all phalanges of hand in men represent ardent, easily aroused disposition. Light colored hair on hands shows people easily influenced and often lacking in passion. Furthermore dark colored hair on hands shows quick passionate nature.

Color of the skin:

Color of the hand is a guide to certain aspects of temperament. Action of the heart is mainly responsible for hand color. However no hand retains one color for very long. I have observed that people who are having very sensual instincts and passionate nature having reddish skin with warm temperature.

Nails:

Nails are very useful in medical diagnosis. It can also help us to evaluate character. Red nails indicate strong blood circulation and a tendency for flashes of anger, over excitement and hypertension. I had found this type of nails common in the people who are having strong sex drive and more able to express passion in purely physical terms. Nevertheless they were inclined to bursts of anger and need to find outlets for their excess energy.

Pink with a smooth lustrous surface of nails indicate good blood circulation, adequate nutritional intake and overall level of good health. Furthermore Pink nails lean towards to modify a strong sex drive and tend to enjoy balance between the physical and emotional expressions of love and passion.

Pale nails indicate low physical vitality, poor nutrition and low sex drive, unless modified by other hand perspectives.

Long nails indicate analytical ability and tendency to narrow minded in relationships. Short nails indicates inquisitiveness and impatient. Short nails often indicates critical person who not only focuses on the perceived short comings of others but also on his or her own faults. Broad nails reveal a broad minded personality and uncritical nature.

Notice: Hippocratic nails were often found on people who were prone to sexual activities very much.

Exaggerated mounts:

Mount of Venus and Moon represents the active and the passive sides of the subconscious life of a person. Their significance may be determined by their size, shape, ridge patterns and linear formations.

The nature of Moon is related in subconscious, and always passive. Chiromically the mount of Moon denotes to the form of imagination. It is hard to tie these people down to one partner at a time. They are so restless. Whorl or loop patterns on this mount indicates strong tendency towards over imagination. They are regarded as atavistic markings and that indicates basic uncertainty. Flat mount of Moon refers to emotionally cold type and with this type of people not like to have much imagination and can be entirely insensitive to the needs of others.

The mount of Venus refers to those energies which find more positive and externalized direction which represents the sensual and creative powers within the mind. Furthermore this mount is connected with artistic ability. I have observed that many creative people have a well-developed mount of Venus. If the Venus mount is overdeveloped in relation to other mounts, the subject will be abandoned, perhaps even oversexed, and not careful of his or her manners when in company. A flat or lifeless mount indicates poor emotional responses and dullness in the matters of art. These people are not good social mixers.

A large, well-formed lower mount of Mars also exposes a great desire to satisfy sexual desires. Good mount of Mars indicates healthy degree of sexual self-assertion. Excess, hard and reddish mount of Mars reveals strong aggressive nature that can easily fall over to cruelty and violence.

Formation of fingers and hand:

According to the researches around the world finger length and the ratio of the second digit (index finger) to the fourth digit (ring finger), can indicate sexual orientation for both men and women, although in opposite patterns. Men with a smaller ratio (index fingers are shorter than their ring fingers) would indicate a heterosexual orientation while men with a larger ratio (index fingers longer than their ring fingers) would indicate a homosexual orientation. Alternatively, women with a larger ratio, those deemed heterosexual, would have longer index fingers and women with a smaller ratio (index finger shorter than their ring finger) would be lesbian. I do agree with this theory according to the results of this research.

Abnormal short or long finger length were found in the people who having abnormal sexual behaviors.

Short fingers denotes impatient, intuitive and impulsive. Long fingers indicate opposite qualities like patience, love of details and analysis. People with bulging 3rd phalanges of fingers are sensual by nature and they enjoy luxury, comfort, good food and lots of sex. Thin fingers indicate tend to reveal more intellectual person. Smooth fingers denote intuitive and impulsive decision making and knotted fingers shows strong analytical mind.

Flexibility of the hand indicates the flexibility of the mind and emotions. In additionally if the top phalange of the fingers bends backward indicates strong creative talents. They may have some difficulty remaining faithful during a relationship. Hands that are only moderately flexible show emotional versatility. Such people are little more in command of themselves and reliable in relationships. They are very adaptable. Very stiff hands were found frequently amongst elementary types. Stiffness indicates hard and unyielding disposition and rigid personality even when they are alone with a partner.

Little finger: Finger of Mercury represents our relationships with opposite sex and parental relationships. In addition to that finger of Mercury is related to vocal ability in all its forms. A long nice looking little finger is a sure sign of good lover and good speaker. Most of successful public speakers, politicians, lawyers, writers, dancers and business people have well developed little finger.

When the little finger is clearly isolated from other fingers, then we can suspect immediately there are difficulties in relationships. Along with this position when there is a large, prominent mount of Venus and deeply marked long broken girdle of Venus denotes that the root problem is too great a preoccupation with sex. It is necessary to define whether the preoccupation is imaginative in nature, or physical and carnal. Analyzing whole hand reveal all that is necessary.

The recognizable isolation of the little finger in picture is further emphasized by the ring, which shows that the subject's main problem in life is one of relationships. If it is ring finger of the left hand, we can suspect there is addiction on one of the parents. Other indications help to recognize whole story.

Low set little finger is also a sign of parent fixation which invariably leads to sexual difficulties with a partner. It was most common in childish and sensitive people's hands.

For a medical perspective small deformed in this finger accompany cretinism or thyroid deficiency. Physiologically the finger of mercury is connected with the abdominal organs, with the reproductive system, the bladder and kidneys. According to the Spire's findings "*uterine illness can be recognized by second phalange of the little finger. Especially thick lower phalange denotes that the ovaries are affected. Bladder and kidney troubles are revealed by an inward bend top phalange*". In addition to that through this research work I found that inward bend top phalange of little finger as a sign of addiction. (For example addiction to alcohol)

If the first phalanx of the Little finger is longer than the other two phalanges, it indicates these people are sexually permissive; they never seem to appreciate anyone, never have long relationships and cannot find happiness. If the first phalanx of the Little finger is shorter than the two other phalanges, these people will suffer impotency, have sexual and social problems. They can be cold and have little insight.

If the second phalanx is longer than the other phalanges, it indicates these people will have difficulty of making up their minds, very open and receptive.

If the third phalanx is longer than the other two phalanges, these people are always finding fault. They are always seeking perfection and have a frigid nature. If the third phalanx is shorter than other two phalanges, it indicates that these people irresponsible have problems finding and keeping their jobs and have no compunction about letting others support or take care of them.

A twisted or distorted little finger, very often hereditary, most palmists regard this as a sign of lying and trickery. When fingers show a marked twist or distortion they are a symbol of defeat, their owners tend to approach life in a wrong way and avoid facing facts. They are inclined to be evasive, suspicious and unduly cautious and seem unable to follow a straight path. They lack inner harmony. They hardly achieve anything worthwhile in life. If they do reach a measure of success it is generally due to underhanded and devious means. They in fact, tend to be immoral and deceitful. **Notice:** A deformed finger of Mercury is an atavistic sign. In addition to that if 3rd phalange is nonexistent is always an atavistic marking, interestingly in that hands which showed all usual marks of degeneracy.

During this research I have found that the thumb is more affected in cases of venereal disease. The mount of Venus which is known as the third phalange of the thumb is connected with the vitality of the person and his passions, thumb gets directly connected with the sex glands and it is natural that diseases of the sex glands should be reflected on the thumb.

B. Chiromancy:

Type of the lines:

At the beginning when the head line and the life line are joined together, it indicates uncertainty in emotional expression. This type of people is very sensitive to external influences. Space between these two lines shows that independent ideas and very less concerned about their partner's needs.

The long head line signifies mind overrules the emotions. If the line turns a little upward at the termination it indicates very cold nature. When the heart lines goes low on the hand with fair condition then emotional and sexual life is open, warm and very affectionate. Higher positioned heart line indicates colder nature. Many fine lines drooping away from heart line suggest a person prone to falling in love but never capable to enjoy a satisfactory and lasting relationship.

Simian line is composed of elements common to the line of Heart and the line of Head and it may be understood from one point of view as representing a conflict between these two. Head line moves from conscious sphere to the subconscious. These two natural tendencies are restricted in the simian line and the result is an enormous inner conflict. It is to be expected that inner conflict should give rise to the brutal nature. With other unpleasant positions Sydney line indicates minor behavioral problems and intolerance nature. Suwon line denotes excess of loving disposition.

Heart line represents the emotionality of a person as well as intimately connected with the sexual type of the subject. Strength of the line shows the type sexuality.

The straight and short heart line indicates a marked feminine type of sexuality, and definite promiscuity. An extremely short heart line betrays heartlessness. If the heart line starts in the middle of the palm they are people who are selfish, prone to be sensuous without being warm hearted. They seek satisfaction for their physical sexually appetites. They are unable to appreciate love and tend to be crude, rough and primitive.

In a male hand, heart line curves down at its termination to the base of the mount of Jupiter shows femininity of the subject's sexuality. Equally in a female hand shows masculinity of the subject's sexuality. This type of heart line is called Suwon line.

Marriage lines can be seen under the little finger, on the mount of Mercury. These lines represent strong relationships over emotional and sexual nature. Low set marriage line denotes strong sex life that begins early. If the line sets in high it shows sex drive increase with age. Marriage line inclined towards heart line indicates failed relationship.

Girdle of Venus is represents erotic make-up of the individual. Fred Gettings interpret it as this way. "*Chiromantically the line acts as a connection between the external conscious and inner conscious quality of the personality. It links the self-assertive elements with the emotions, and therefore tends to be a dangerous marking*". I agree with this opinion. Through this research work I have observed this on the hands of drug addicts and others in frequent need of artificial emotional stimulation. All of these people have striated and criss- cross Girdle of Venus. People who have girdles are in constant need of excitement and variety. Therefore traditionally Girdle of Venus describes as a line of strong sexual appetite.

A clear and short Girdle of Venus is a good marking of emotional alertness. It denotes a sense of balance in emotions and sexuality. A large and broken Girdle of Venus reveals disturbances in love or unsatisfied libido or sensuality at its worst. Notice: a star, island or spots on the Girdle of Venus specially if it is double or multiple denotes grave venereal disease.

Via lascivia or 'Line of Lustfulness' were found on the hands of people who had strong libido. With the other indications this line denotes degenerate behaviors, like inclined to sensuality and vulnerability to intoxication through alcohol and drugs. This line were found majority of prostitutes and porn stars. Vertical lines beneath the Mercury finger represent children.

Signs and markings:

Strong grille on the mount of Venus indicates physical passion and sexual interest. Some palmists claim that this sign shows compulsive masturbator. I have seen this sign on most of rapist's hands with the excess mount of Venus, coarse skin and reddish color of hands.

C. Dermatoglyphics:

Whorl and loop patterns on these mounts are always a sign of a strong tendency towards over imagination. They must be regarded primarily as atavistic markings, indicative of a basic instability. Such markings give undue predominance to the mount, separating the unconscious 'for special consideration' and the resulting instability is one in which the unconscious elements of the subject's life is not in tune with the conscious elements. Patterns on mount of Moon and Venus increase the quality of that mount.

People who have loop type of fingerprints are indicated that they are flexible nature adaptable and have a well-rounded view all things. By contrast whorl denotes tend to be most difficult to get along with others. They are like to be independent. Arch pattern denotes creative nature.

The well-developed apex A situated between Index and Ring finger indicates moodiness and danger of deep depressive moods.

D. Gestures:

A ring worn in the little finger always conveys some sort of message of imbalance relating to intimate relationships. For example a confirmation of strong parent fixation, strong desire to collect money or sexual abnormality. Many homosexuals also wear such rings. Some Lesbians wear rings on their little finger as form of identity token. When drinking a cup of tea most of women allow their little finger to jut out as a sign of solidarity. (Little finger represents independence. Early campaigners for emancipation expressed solidarity by holding out their little finger when drinking tea.)

Nails are colored with rainbow colors to represent concept of transgender.

Extending the finger is considered a symbol of contempt in several cultures. The middle finger gesture was used in Ancient times as a symbol of sexual intercourse. Sometimes it shows disrespect, and is roughly equivalent in meaning to "fuck off", "fuck you", "shove it up your ass", "up yours" or "go fuck yourself". There is another meaning of this gesture. The index finger and ring finger besides the middle finger in more contemporary periods has been likened to represent the testicles. This gesture is performed by showing the back of a hand that has only the middle finger extended upwards. See figure 01



Figure.01: Reversed hand with middle finger extended

Fig sign hand gesture may have originated in ancient Hindu culture to represent the lingam and yoni. Among early Christians, it was known as the *manus obscena*, or "obscene hand".



Figure.02: Fig sign

The shocker is a hand gesture with a sexual implication. This gesture is performed by ring finger and thumb is bent down while the other fingers are extended upwards. It means that two fingers in your elastic muscular canal that extends from the cervix to the vulva and little finger in to the anus.



Figure.03: shocker sign

Most of people use their fingers to say I Love You. This sign is a combination of the letters I, L and Y used in sign language.

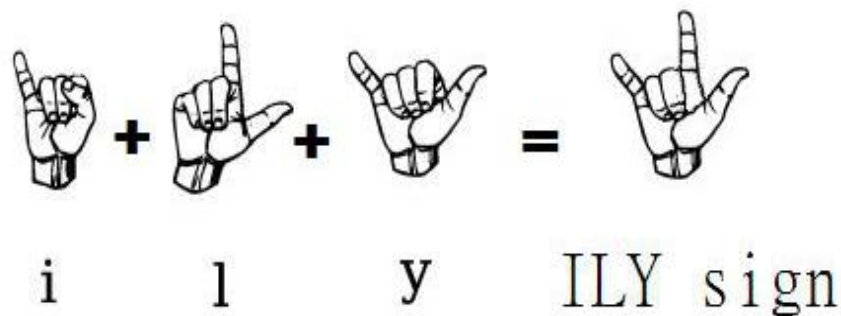


Figure.04: I Love you hand sign

E. Other observations:

BDSM includes bondage and discipline (B&D), dominance and submission (D&S), and sadism & masochism (S&M). It's a combination of varieties of erotic practices related to giving and receiving pain. People who are involved in BDSM had several features in hand that can indicate this desire. All of those signs show strong and rough nature of person.

1. Suwon line (coarse emotional expression)
2. Simian line (Primitive behaviors)
3. Separated life and head line (independence)
4. Prominent mount of Venus and life line going an excessively full curve that across the center of the hand (sensual overindulgence)
5. Girdle of Venus and Via lascivia
6. Twisted or deformed fingers
7. Long Index finger (dominance)
8. Separated little finger (independence)
9. Club thumb or low set thumb or high set thumb (primitive behaviors)
10. Strong mount of Mars (the influence from the mars indicates passionate expression of feelings and a strong physical need for sexual expression)
11. Course skin and hard hand (rough nature)
12. Short reddish nails (aggression)

Asexuality is the lack of sexual attraction to anyone, or low or absent interest in sexual activity. Asexuality is distinct from abstention from sexual activity and from celibacy, which are behavioral and generally motivated by factors such as an individual's personal or religious beliefs. Through this research work I found few signs that show coldness in approach to sex.

1. Heart line ends very low down in the hand below Jupiter (represents more inhibited and less physical approach. Certainly they think physical sex is not the chief aim. This is because of qualities of heart line restrained by the influence of head line.)
2. Long 1st phalanges
3. Strong thumb (strong will power)
4. Short little finger
5. Flat mount of Venus
6. Shallow curved line of life (this is represent the imposed soberness of a monk or nun who has negated sensory pleasures.)
7. Clear hand with good color

A prominent and developed long Index finger with a clearly marked apex A at the base signifies a dominating nature. In contrast, a short Index finger and a small or flat mount of Venus are indicators of more dependent and submissive individual. However most important thing is for a long lasting relationship is one partner should be dominant and other submissive or dependent by nature. Sexual compatibility is a major factor of a pleasant and stable relationship.

Few examples for different types of sexual behaviors and desires:



Figure.05: Hand of a Porn star

(My case No HA0131)

Figure.06: Hand of a heterosexual man

who is sexually active always (My case No HA0132)



Figure.07: Left and right hand of an actor who have strong sexual desire Unmarried / primitive sexual behaviors can be seen (My case No HA0056)

4. DISCUSSION

Human sexuality is made up of three components vital force, pleasure and aggression. When we analyze hands our aim is to understand how these aspects make ones sexuality and how it could expresses in our day-to-day life. Sexual aspects can also be directed into many different areas of our lives. For example properly guided sexual energy can create at all levels of existence including art, science and as well towards spiritual pursuits through meditation, devotion and expanded levels of consciousness. The powers behind healing and concern toward all life can spring from this primal sexual force.

Research has covered the hand signs that can be describing psychological issues involving sex and relationships. There are four main sexual orientations. Those are Heterosexuality, Homosexuality, Bisexuality and Asexuality. While there are no clear marks and signs to show certain sexual orientation. But considering hand as a whole can describe these orientations and sexual behaviors.

5. CONCLUSION

Sexual energy is the powerhouse of the human body. Inner growth can rapidly promote when this energy filtered and sublimated. When we advise others through hand analysis we have a chance to help people to get in touch with their reality. By understanding our own hands, we can learn to appreciate and accept our sexual nature which can help others to discover their drive and self-acceptance.

ACKNOWLEDGEMENTS

I would like to thank Prof. H.M.D.R. Herath (Head of the Department, Department of sociology, University of Peradeniya, Sri Lanka) for his most support and encouragement. I sincerely acknowledge all my clients who shared their life stories as example for this work.

REFERENCES

- [1] A.A. Bailey, P.L. Hurd / Personality and Individual Differences 39 (2005) 829–836.
- [2] Dylan Warren-Davis, The Hand Reveals Fred Gettings, The Book Of The Hand Frietson Galis / Clara M. A. Ten Broek / Stefan Van Dongen / Liliane C. D. Wijnaendts, Arch Sex Behav (2010) 39:57–62 / DOI 10.1007/s10508-009-9485-7 Sexual Dimorphism in the Prenatal Digit Ratio (2D:4D)
- [3] Fig sign picture (figure 02) taken by <http://www.bspcn.com/2007/09/25/the-top-10-hand-gestures-you%E2%80%99d-better-get-right/>
- [4] I Love You hand sign picture (figure 04) taken by https://en.wikipedia.org/wiki/ILY_sign Nathaniel Altman, Sexual Palmistry
- [5] R. S. Bali 1994, Anthropology of crease morphogenesis, a scientific analysis Robert P. Burriss · Anthony C. Little · Emma C. Nelson, 2D:4D and Sexually Dimorphic Facial Characteristics Arch Sex Behav DOI 10.1007/s10508-006-9136-1